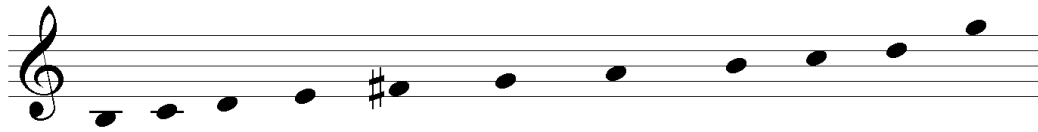


Infant Holy, Infant Lowly

Easier Version



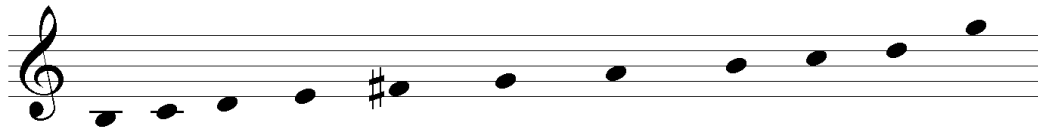
Tempo ♩ = 80

Polish Carol; arr. Andrew Duncan

Piano accompaniment for the easier version of 'Infant Holy, Infant Lowly'. The score is in G major (one sharp) and 3/4 time. It consists of three systems of two staves each (treble and bass clef). The first system covers measures 1-5, the second system covers measures 6-11, and the third system covers measures 12-17. Fingerings (1, r, l) and articulations (r-l) are indicated throughout. A large circle highlights measures 3 through 11. Measure 17 includes the instruction 'LV' (Lento) above the bass staff.

Infant Holy, Infant Lowly

Intermediate Version



Tempo ♩ = 80

Polish Carol; arr. Andrew Duncan

Piano accompaniment for the song, consisting of three systems of two staves each (treble and bass clef). The music is in 3/4 time and the key of D major. The first system contains measures 1 through 5, the second system contains measures 6 through 11, and the third system contains measures 12 through 17. Measure 15 is circled. Fingering numbers (1, 2, 3, 4, 5) are placed above notes in the right hand. Articulation markings 'r' (right hand) and 'l' (left hand) are placed below notes. A large circle highlights measures 2 through 4.