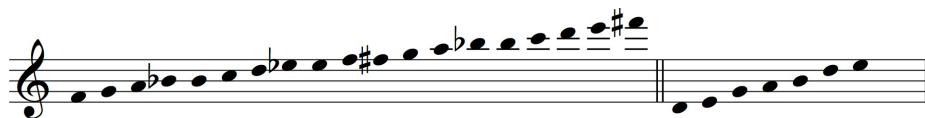


# Be Thou My Vision

## Handbell Solo

Handbells

Chimes



SLANE

Moving freely (♩=116)

arr. Pamela M. Robertson

Handbells

Piano

*mp*

2 3 4 LV 5 ⊕

Musical notation for Handbells and Piano. The Handbells part is on a single treble clef staff with a 3/4 time signature. The Piano part is on a grand staff (treble and bass clefs) with a 3/4 time signature and a key signature of one sharp (F#). The piano part includes dynamic markings like *mp* and accents. The Handbells part includes fingerings 2, 3, 4 LV, and 5 ⊕.

6 R 7 8 9 10

*mp*

Musical notation for Handbells and Piano. The Handbells part is on a single treble clef staff with a 3/4 time signature. The Piano part is on a grand staff (treble and bass clefs) with a 3/4 time signature and a key signature of one sharp (F#). The piano part includes dynamic markings like *mp* and accents. The Handbells part includes a fingering 'R' and a slur over measures 7 and 8.

11 12 13 14 15

Musical notation for Handbells and Piano. The Handbells part is on a single treble clef staff with a 3/4 time signature. The Piano part is on a grand staff (treble and bass clefs) with a 3/4 time signature and a key signature of one sharp (F#). The piano part includes dynamic markings like *mp* and accents. The Handbells part includes a slur over measures 13 and 14.

16 17 18 19 20

21 22 23 24 25

26 27 28 29 30

31 32 33 34 35

## **PAGES OMITTED FROM SAMPLE**

(don't worry, they're there in the real copy)

56 57 58 59

56 57 58 59

60 61 62 63 64

60 61 62 63 64

65 66 67 68 69 70

65 66 67 68 69 70

71 72 73 opt. 74 75 76

71 72 73 opt. 74 75 76

*poco rit.* *pp* *Slower*

Ped.

## **PAGES OMITTED FROM SAMPLE**

(don't worry, they're there in the real copy)

Handbell Solo

# Be Thou My Vision

Handbells

Chimes



Moving freely (♩=116)

SLANE

arr. Pamela M. Robertson

